

465W JAM54D40 LB Black Frame n-type Double Glass Bifacial Modules

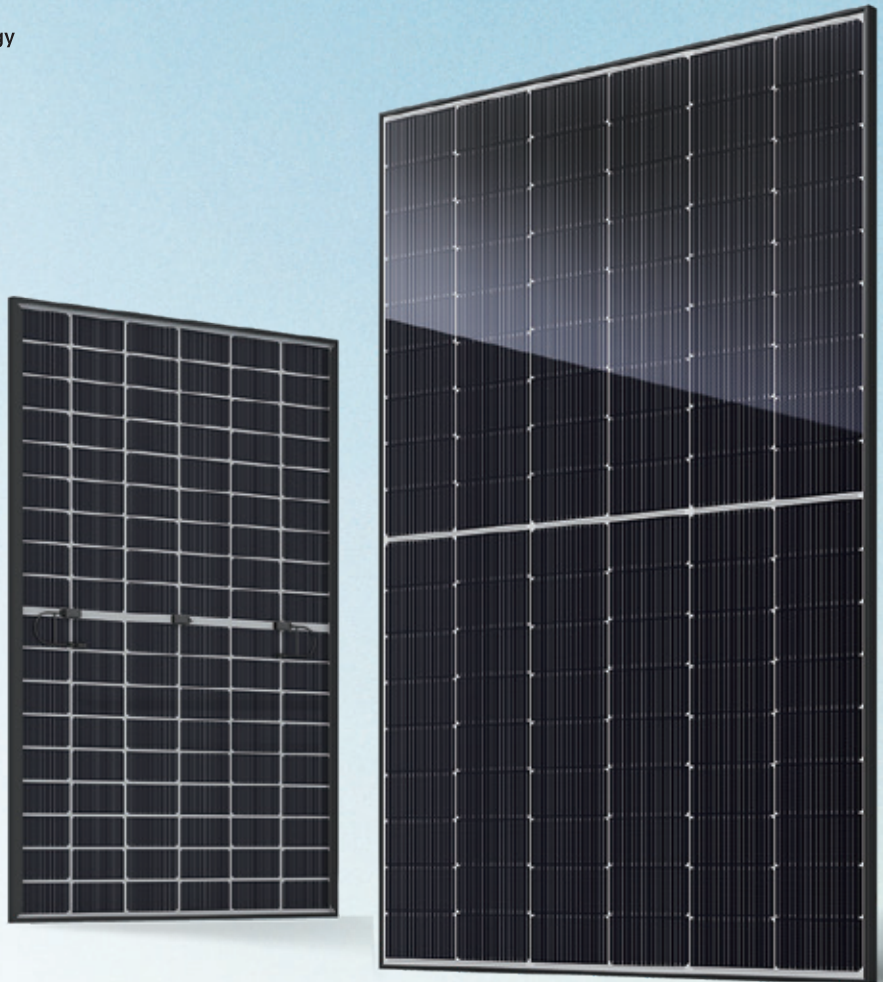
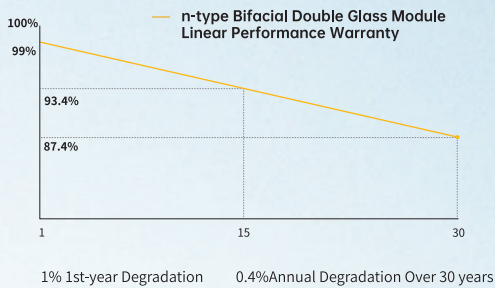


Premium Cells

n- Bycium+	MBB Half-Cell Technology
16BB	

Premium Modules

- Superior energy yield for lower LCOE
- High-efficiency with advanced n-type Bycium+ cell technology
- Higher power output with High-density module design
- Excellent reliability, certified by authoritative institutions



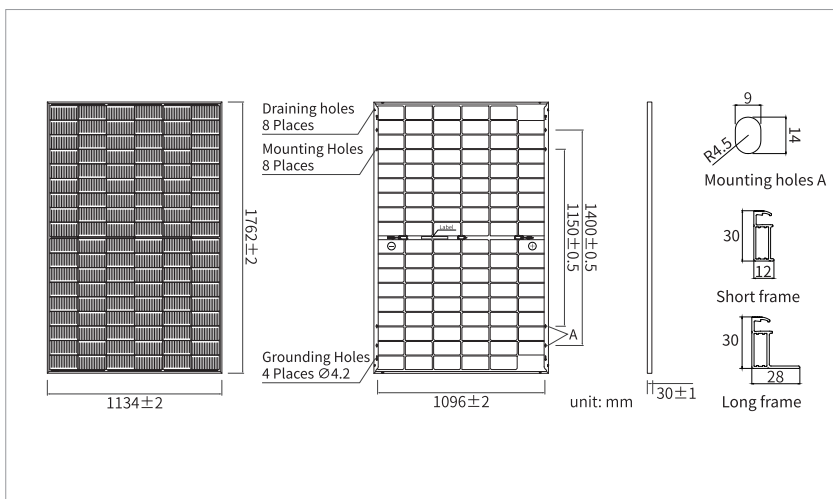
- 15-year product warranty
- 30-year linear power output warranty

Comprehensive Certificates

- IEC 61215, IEC 61730, UL 61215, UL 61730
- ISO 9001: 2015 Quality management systems
- ISO 14001: 2015 Environmental management systems
- ISO 45001: 2018 Occupational health and safety management systems
- IEC 62941: 2019 Terrestrial photovoltaic (PV) modules - Quality system for PV module manufacturing

465W JAM54D40 LB

n-type Double Glass Bifacial Modules



MECHANICAL PARAMETERS

Cell	Mono
Weight	21.4kg
Dimensions	1762±2mm × 1134±2mm × 30±1mm
Cable Cross Section Size	4mm ² (IEC), 12 AWG(UL)
No. of cells	108(6×18)
Junction Box	IP68, 3diodes
Connector	QC 4.10-351/ MC4-EVO2A
Cable Length (Including Connector)	Portrait: 400mm(+)/200mm(-) Landscape: 1200mm(+)/1200mm(-)
Frame	Anodized Aluminium Alloy
Front Glass	1.6mm, Anti-reflection Coating
Back Glass	1.6mm, Heat Strengthened Glass
Packaging Configuration	36pcs/Pallet, 936pcs/40HQ Container

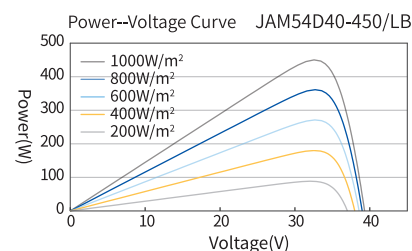
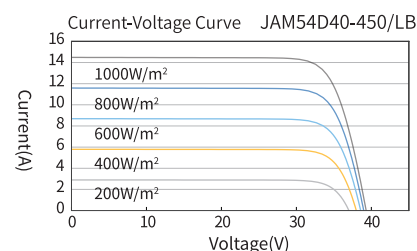
Remark: customized frame color and cable length available upon request

ELECTRICAL PARAMETERS AT STC

TYPE	JAM54D40 -440/LB	JAM54D40 -445/LB	JAM54D40 -450/LB	JAM54D40 -455/LB	JAM54D40 -460/LB	JAM54D40 -465/LB
Rated Maximum Power(Pmax) [W]	440	445	450	455	460	465
Open Circuit Voltage (Voc) [V]	38.90	39.10	39.30	39.50	39.70	40.20
Maximum Power Voltage(Vmp) [V]	32.47	32.65	32.82	33.00	33.17	33.50
Short Circuit Current(Isc) [A]	14.31	14.40	14.48	14.56	14.64	14.65
Maximum Power Current(Imp) [A]	13.55	13.63	13.71	13.79	13.87	13.88
Module Efficiency [%]	22.0	22.3	22.5	22.8	23.0	23.3
Power Tolerance	0~+3%					
Temperature Coefficient of Isc(α _{Isc})	+0.045%/°C					
Temperature Coefficient of Voc (β _{Voc})	-0.250%/°C					
Temperature Coefficient of Pmax(γ _{Pmp})	-0.290%/°C					
STC	Irradiance 1000W/m ² , cell temperature 25°C, AM1.5G					

Remark: Electrical data in this catalog do not refer to a single module and they are not part of the offer. They only serve for comparison among different module types.

CHARACTERISTICS



ELECTRICAL PARAMETERS AT BNPI

TYPE	JAM54D40 -440/LB	JAM54D40 -445/LB	JAM54D40 -450/LB	JAM54D40 -455/LB	JAM54D40 -460/LB	JAM54D40 -465/LB
Rated Max Power(Pmax) [W]	485	490	495	500	505	513
Open Circuit Voltage(Voc) [V]	38.90	39.10	39.30	39.50	39.70	40.20
Max Power Voltage(Vmp) [V]	32.47	32.65	32.82	33.00	33.17	33.50
Short Circuit Current(Isc) [A]	15.78	15.85	15.93	16.01	16.07	16.17
Max Power Current(Imp) [A]	14.94	15.01	15.09	15.16	15.23	15.32
BNPI	Front Irradiance 1000W/m ² , Rear Irradiance 135W/m ² , cell temperature 25°C, AM1.5G					

** For Nexttracker installations, maximum static load please take compatibility approve letter between JA Solar and Nexttracker for reference.

OPERATING CONDITIONS

Maximum System Voltage	1500V DC
Operating Temperature*	-40°C~+70°C
Maximum Series Fuse Rating	30A
Maximum Static Load, Front**	5400Pa(112 lb/ft ²)
Maximum Static Load, Back**	2400Pa(50 lb/ft ²)
NOCT	45±2°C
Bifaciality	80%±5%
Safety Class	Class II
Fire Performance	UL Type 38/Class C

*PV module 98th percentile operating temperature : 70°C